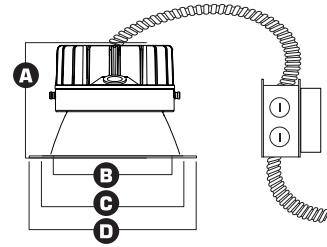


HHJ8-LED 8" ARCHITECTURAL HIGH LUMEN LED RETROFIT DOWNLIGHT



3000 LUMENS



- A** Height = 7-1/8"
- B** Trim Aperture = 8"
- C** Cut-out = 8-1/2"
- D** Trim Outside Dia. = 9-1/8"

INPUT VOLT.	INPUT FREQ.	INPUT CUR.	INPUT POWER	THD	POWER FACTOR	LUMENS
120/277	50/60Hz	333mA/144mA	40W(+/-5%)	<20%	>0.9	3000
120/277	50/60Hz	266mA/115mA	32W(+/-5%)	<20%	>0.9	2000
120/277	50/60Hz	200mA/86mA	24W(+/-5%)	<20%	>0.9	1200
120/277	50/60Hz	150mA/65mA	16W(+/-5%)	<20%	>0.9	900

DESCRIPTION - 8" LED dedicated Architectural Retrofit Module with integral LED heat management casting and driver (installed on junction box). Available in 900 lumens (16W), 1200 lumens (24W), 2000 lumens (32W) & 3000 lumens (40W). Lighting is smooth and comfortable while using 25% less energy than the common CFL downlight. Plus the eco-friendly Maxilume LED system features 70% lumen maintenance at 50,000 hours life, with Energy Star and California Title-24 (compliances pending).

LED
8"

FEATURES - Maxilume LED Retrofit luminaires are ideally suited for use in hospitality, health care, commercial, institutions, retail and other architectural applications. Our retrofit was designed to replace the existing electrical components found in traditional Incandescent or CFL downlights with energy efficient LED technology.



OPTICS - MAXILUME LED Optilux technology combines unmatched performance with visual comfort. Spun 0.05" thick reflector has been designed to gather the light scattered by the LED chip and shape it into functional beams that minimize brightness and glare, while eliminating lamp image. Reflector offers a 55 degree cutoff and smooth frost acrylic diffuser distributes light even throughout the workplace.

PERFORMANCE - Operating system delivers 900 lumens (16W), 1200 lumens (24W), 2000 lumens (32W) & 3000 lumens (40W). All MAXILUME LED luminaires are rated at 85+ CRI. Our stringent chip specifications require only those Chips that produce no ultra violet and virtually no infrared. All LED luminaires are rated and tested to LM-79 and LM-80 standards by an independent laboratory.

THERMAL MANAGEMENT SYSTEM - Using a proprietary coolLED Advanced Thermodynamic Design, Die-cast aluminum heat management system are engineered for extremely long life and service period. Heat sink is attached to top of reflector. The LED light engine is attached to the die-cast heat sink and is easily replaceable and upgradable. Life tests have shown the MAXILUME light engine output will be maintained at 70% of initial at 50,000 hours of operation.

DIMMABLE - The MAXILUME LED system is fully dimmable down to 10% of initial light output with a 0-10 Volt dimmer when ordered with the following options (DIM10-120, DIM10-277). Fixtures can be shipped with a Lutron Hi-lume A series Driver which can be dimmed with Lutron Dimming Systems when ordered with the following options (LUTH-120, LUTH-277). Consult Factory for details.

LED DRIVER/JUNCTION BOX - The LED driver is rated for 50 to 60Hz at 120V /277V input, produces less than 20%THD, and has a power factor between 90% and 100% and is thermally protected for additional safety. MAXILUME's LED driver is installed on the junction box cover so it may be serviced from below the ceiling. UL Listed for through-branch circuit wiring, provided with four 1/2" knockouts, one 3/4" knockout and four Romex knockouts with true pryout slots and strain clamps. Designed for straight through conduit runs.

MOUNTING - Our retrofit is designed to install into an existing downlights mounting frame and convert them into energy efficient LED downlights. Flex is designed to attach into existing junction box.

OUR WORD - The MAXILUME LED lighting system is warranted for 5 years. As a system, we stand behind the entire MAXILUME product.

LISTING

c-UL-us / c-ETL-us - listed for Damp location.
c-UL-us / c-ETL-us - listed for feed Through Wiring.
LM79 / LM80

DIMMING INFORMATION

DIM10 (0-10V Dimming)
LUTH (Lutron® Hi-lume® Dimming)

PATENT NO. D685,118 S

8 INCH ARCHITECTURAL HIGH LUMEN LED RETROFIT DOWNLIGHT

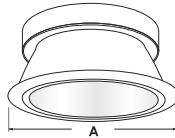
Example: HHJ8-LED-900L-DIM10-120-FL-30K-HH8-8501-CL-WH

TYPE	16 WATT	24 WATT	32 WATT	40 WATT	OPTICS	COLOR	EMERGENCY	TRIM TYPE	REFLECTOR/ RING FINISH	DISC		
HHJ8-LED	<input type="checkbox"/> 900L-LUTH-120 <input type="checkbox"/> 900L-LUTH-277 <input type="checkbox"/> 900L-DIM10-120 <input type="checkbox"/> 900L-DIM10-277	<input type="checkbox"/> 1200L-LUTH-120 <input type="checkbox"/> 1200L-LUTH-277 <input type="checkbox"/> 1200L-DIM10-120 <input type="checkbox"/> 1200L-DIM10-277	<input type="checkbox"/> 2000L-LUTH-120 <input type="checkbox"/> 2000L-LUTH-277 <input type="checkbox"/> 2000L-DIM10-120 <input type="checkbox"/> 2000L-DIM10-277	<input type="checkbox"/> 3000L-LUTH-120 <input type="checkbox"/> 3000L-LUTH-277 <input type="checkbox"/> 3000L-DIM10-120 <input type="checkbox"/> 3000L-DIM10-277	<input type="checkbox"/> FL	<input type="checkbox"/> 30K <input type="checkbox"/> 35K <input type="checkbox"/> 40K	<input type="checkbox"/> EMG-LED	<input type="checkbox"/> HH8-8501 <input type="checkbox"/> HH8-8507 <input type="checkbox"/> HH8-8509 <input type="checkbox"/> HH8-8510 <input type="checkbox"/> HH8-8511 <input type="checkbox"/> HH8-8521	<input type="checkbox"/> HH8-8522 <input type="checkbox"/> HH8-8523 <input type="checkbox"/> HH8-8525 <input type="checkbox"/> HH8-8528 <input type="checkbox"/> HH8-8577	<input type="checkbox"/> CL-WH <input type="checkbox"/> CL-SCH <input type="checkbox"/> SHZ-SHZ <input type="checkbox"/> SHZ-WH	<input type="checkbox"/> W-WH <input type="checkbox"/> MB-WH <input type="checkbox"/> WT-WH	<input type="checkbox"/> BLUE <input type="checkbox"/> RED <input type="checkbox"/> GREEN <input type="checkbox"/> FROST <input type="checkbox"/> AL <input type="checkbox"/> BZ <input type="checkbox"/> WH

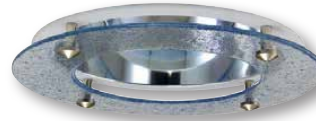


FOR WET LOCATION

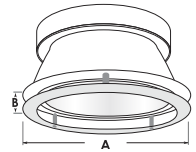
EXAMPLE: HH8-8501-CL-WH
HH8-8501 - REFLECTOR WITH DIFFUSE LENS
REFLECTOR/ RING FINISH:
 CL-WH CL-SCH WT-WH SHZ-WH W-WH SHZ-SHZ MB-WH
 PATENT NO. D685,118 S



A = 9-1/4"



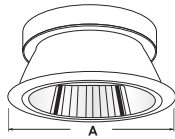
EXAMPLE: HH8-8521-CL-WH
HH8-8521 - STARDUST DECO RING GLASS WITH DIFFUSE LENS
REFLECTOR/ RING FINISH:
 CL-WH CL-SCH WT-WH SHZ-WH W-WH SHZ-SHZ MB-WH



A = 9-1/4"
 B = 1-1/4"



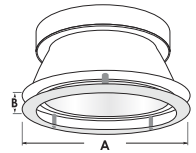
EXAMPLE: HH8-8507-CL-WH
HH8-8507 - WALL WASH REFLECTOR WITH DIFFUSE LENS
REFLECTOR/ RING FINISH:
 CL-WH CL-SCH WT-WH SHZ-WH W-WH SHZ-SHZ MB-WH



A = 9-1/4"



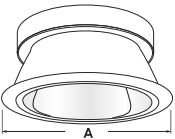
EXAMPLE: HH8-8523-CL-WH
HH8-8523 - PRISM DECO RING GLASS WITH DIFFUSE LENS
REFLECTOR/ RING FINISH:
 CL-WH CL-SCH WT-WH SHZ-WH W-WH SHZ-SHZ MB-WH



A = 9-1/4"
 B = 1-1/4"



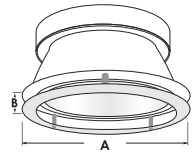
EXAMPLE: HH8-8577-CL-WH
HH8-8577 - DOUBLE WALL WASH REFLECTOR WITH DIFFUSE LENS
REFLECTOR/ RING FINISH:
 CL-WH CL-SCH WT-WH SHZ-WH W-WH SHZ-SHZ MB-WH



A = 9-1/4"



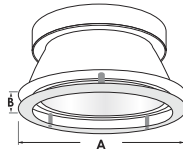
EXAMPLE: HH8-8522-CL-WH
HH8-8522 - EURO DECO RING GLASS WITH DIFFUSE LENS
REFLECTOR/ RING FINISH:
 CL-WH CL-SCH WT-WH SHZ-WH W-WH SHZ-SHZ MB-WH



A = 9-1/4"
 B = 1-1/4"



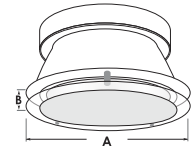
EXAMPLE: HH8-8509-CL-WH
HH8-8509 - DECO GLASS REFLECTOR WITH DIFFUSE LENS
REFLECTOR/ RING FINISH:
 CL-WH CL-SCH WT-WH SHZ-WH W-WH SHZ-SHZ MB-WH
GLASS FINISH:
 BLUE, RED, GREEN, FROST



A = 9-1/4"
 B = 1-1/4"



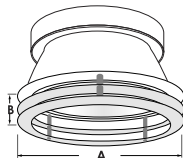
EXAMPLE: HH8-8525-CL-WH
HH8-8525 - CENTRAL ETCHED FLOAT GLASS WITH DIFFUSE LENS
REFLECTOR/ RING FINISH:
 CL-WH CL-SCH WT-WH SHZ-WH W-WH SHZ-SHZ MB-WH



A = 9-1/4"
 B = 1"



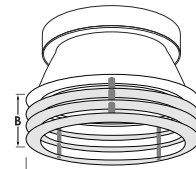
EXAMPLE: HH8-8510-CL-WH
HH8-8510 - DOUBLE RING GLASS WITH DIFFUSE LENS
REFLECTOR/ RING FINISH:
 CL-WH CL-SCH WT-WH SHZ-WH W-WH SHZ-SHZ MB-WH
GLASS FINISH:
 BLUE, RED, GREEN, FROST



A = 9-1/4"
 B = 1-1/2"



EXAMPLE: HH8-8511-CL-WH
HH8-8511 - TRIPLE RING GLASS WITH DIFFUSE LENS
REFLECTOR/ RING FINISH:
 CL-WH CL-SCH WT-WH SHZ-WH W-WH SHZ-SHZ MB-WH
GLASS FINISH:
 BLUE, RED, GREEN, FROST



A = 9-1/4"
 B = 2-1/4"

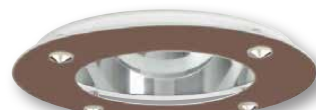


ALUMINIUM DISC

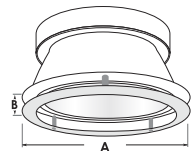
EXAMPLE: HH8-8528-CL-WH-AL
HH8-8528 - REFLECTOR WITH ALUMINIUM DISC AND DIFFUSE LENS
REFLECTOR FINISH:
 CL-WH CL-SCH WT-WH SHZ-WH W-WH SHZ-SHZ MB-WH
DISC FINISH:
 AL, WH, BZ



HH8-8528-CL-WH-WH



HH8-8528-CL-WH-BZ



A = 9-1/4"
 B = 1-1/4"

